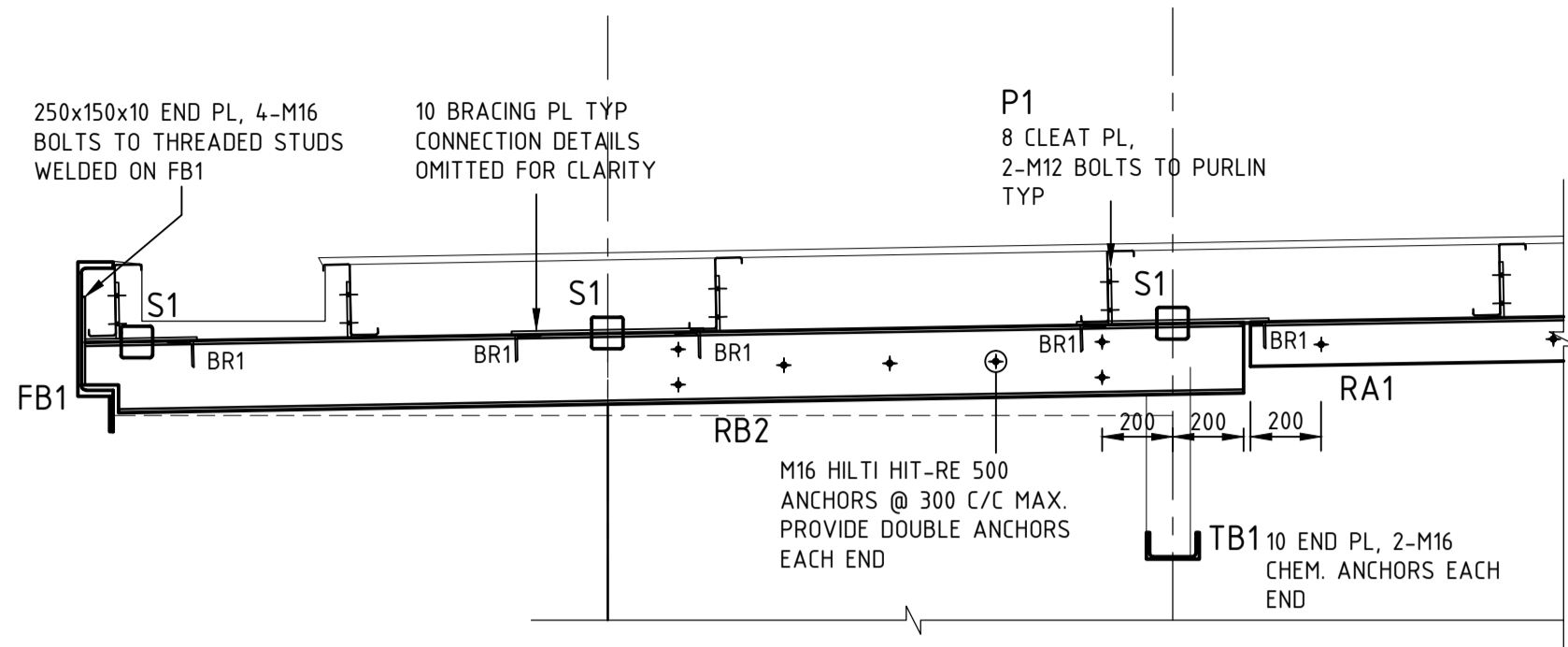
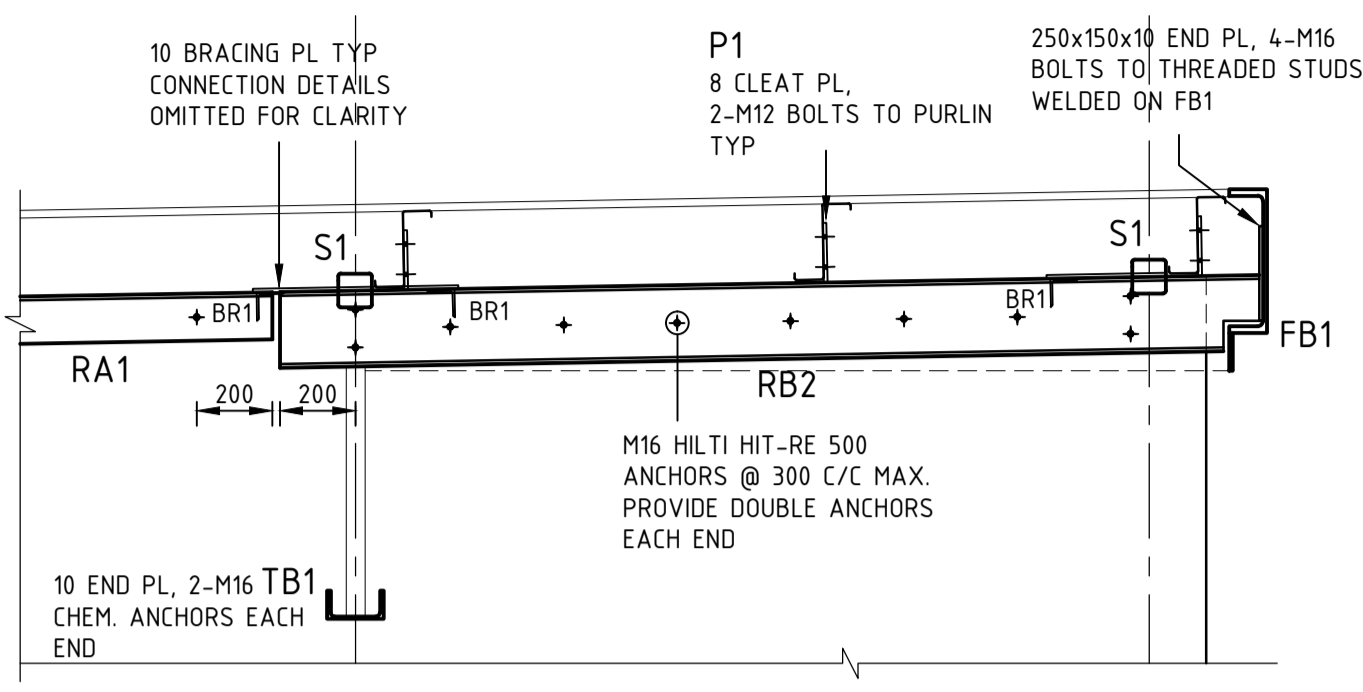


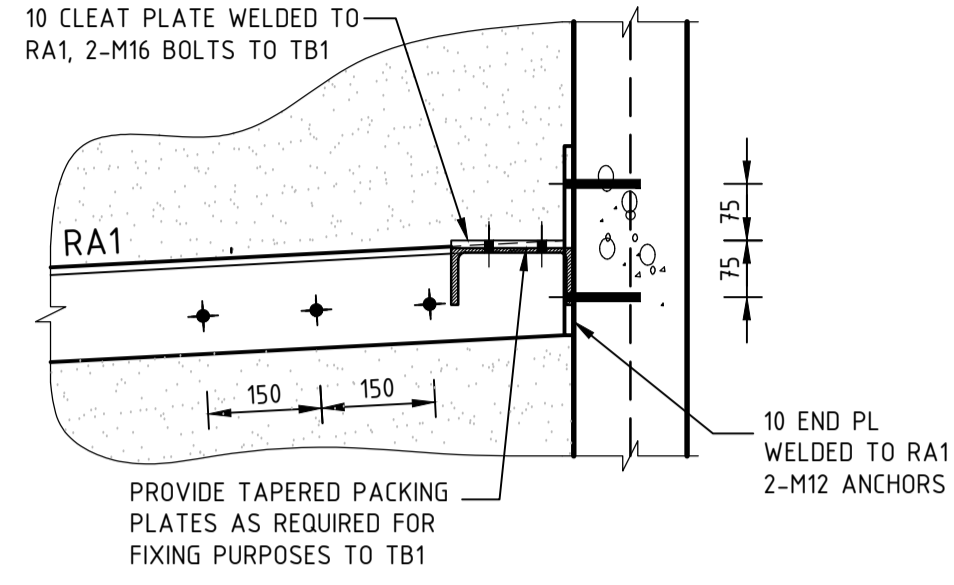
REFER DRAWING S0 FOR GENERAL NOTES



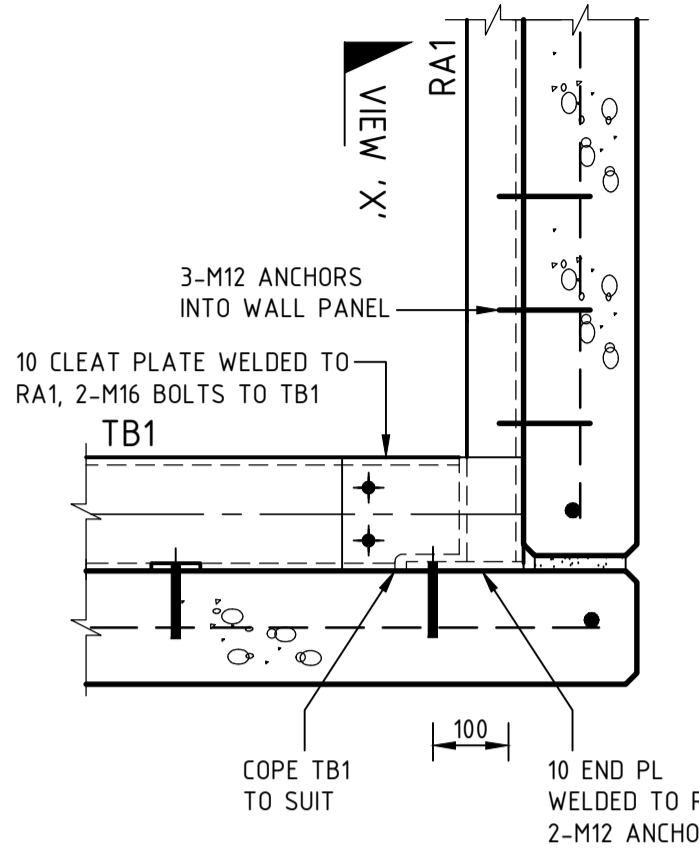
DETAIL E
1:20
S9



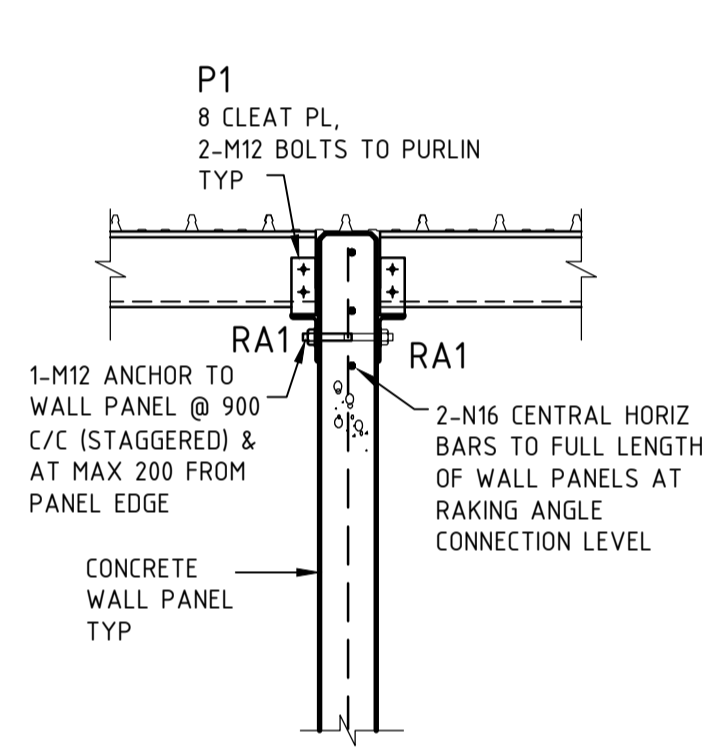
DETAIL F
1:20
S9



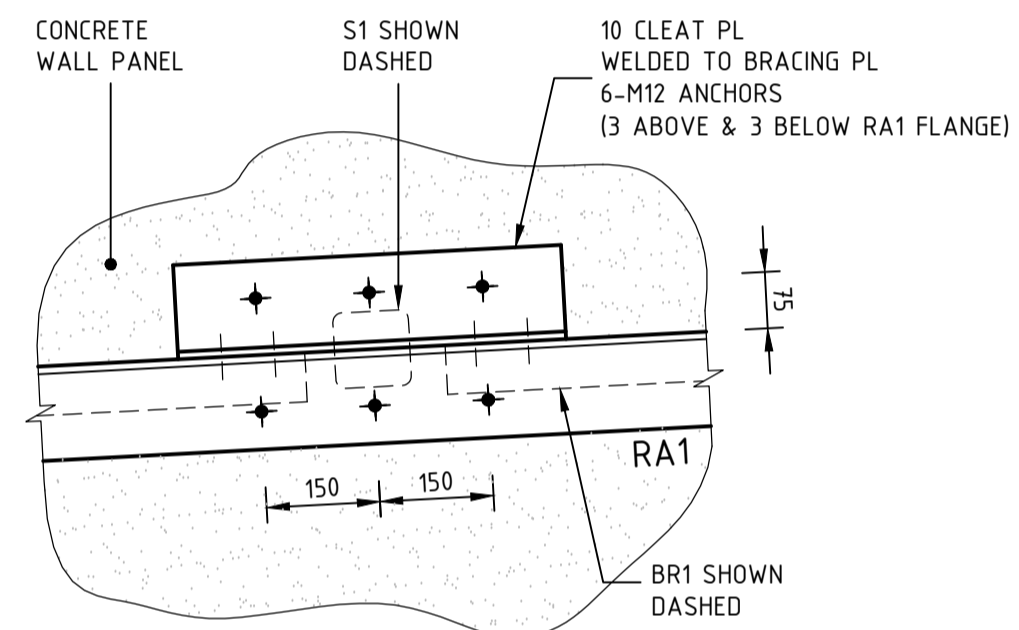
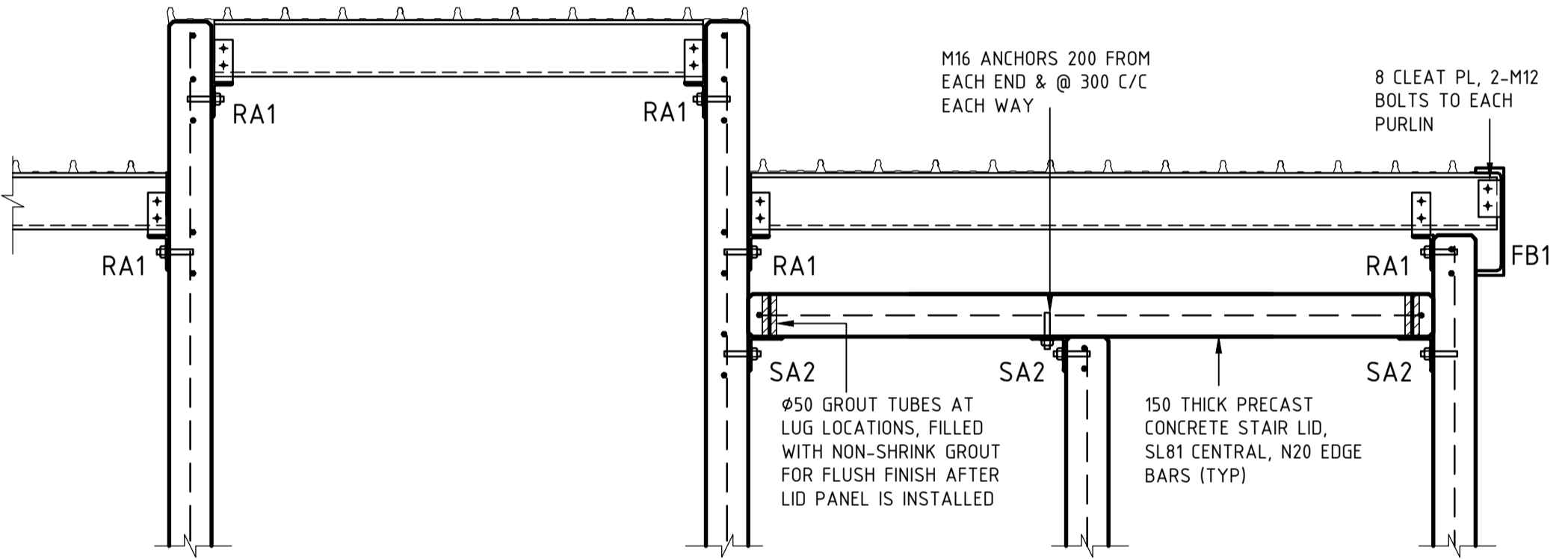
VIEW FROM ARROW 'X'
1:10



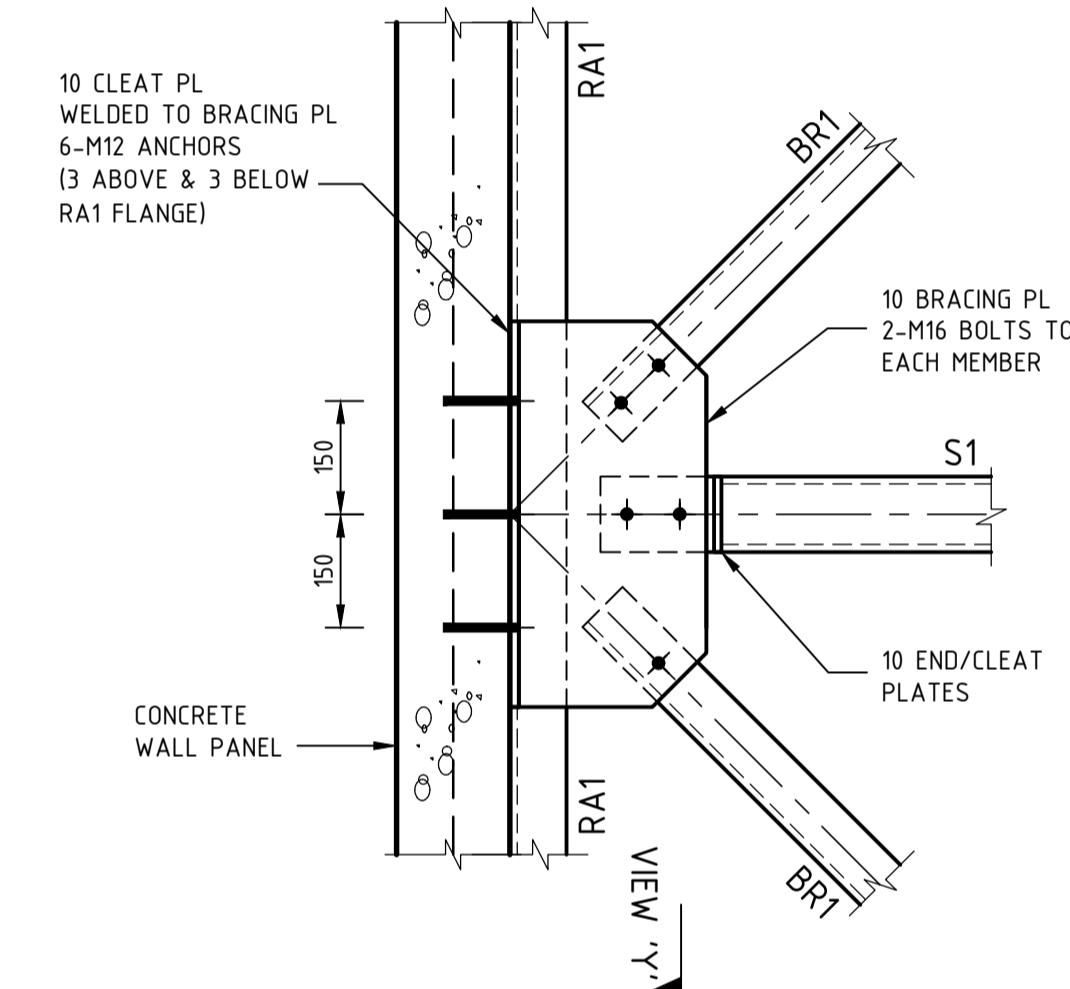
DETAIL H
1:10
NOTE:
PURLINS & FB1/FB2 OMITTED FOR CLARITY
S5



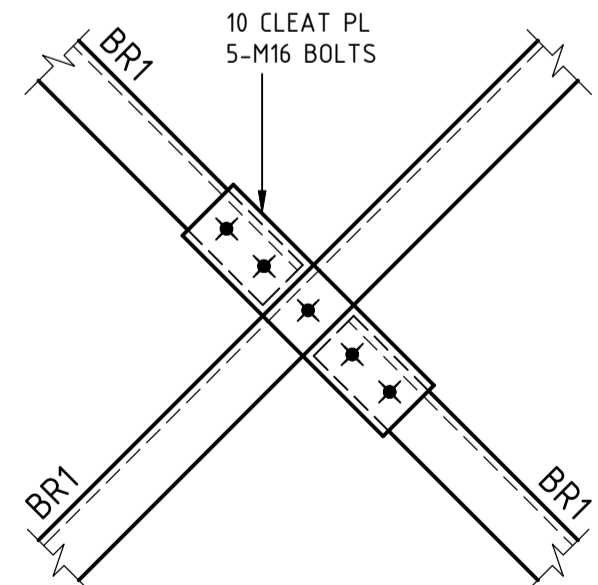
DETAIL G
1:20
S9



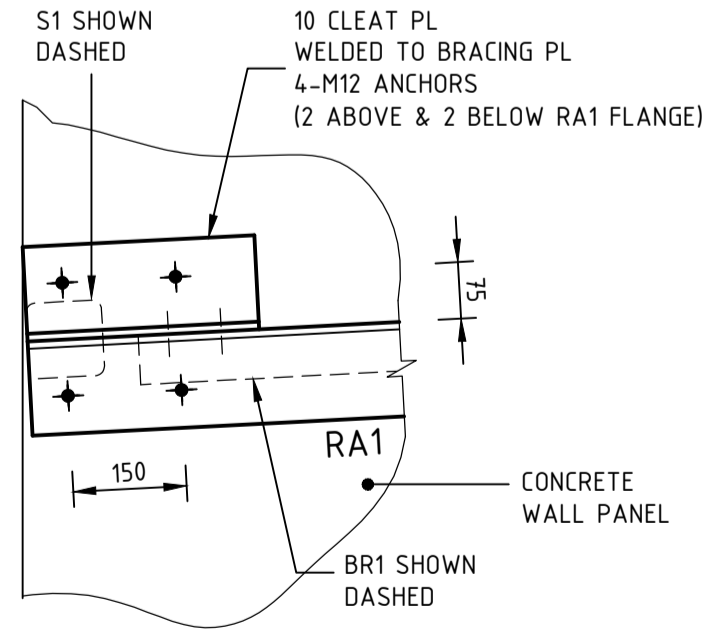
VIEW FROM ARROW 'Y'
1:10



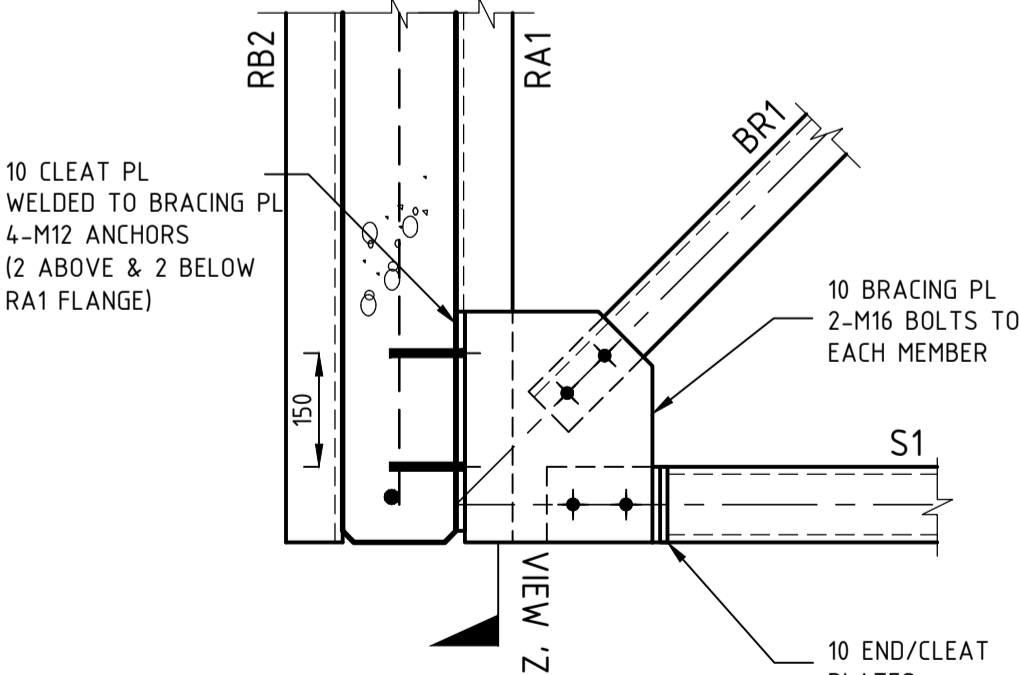
DETAIL I
1:10
NOTE:
PURLINS & ONE SIDE S1 OMITTED FOR CLARITY
S5



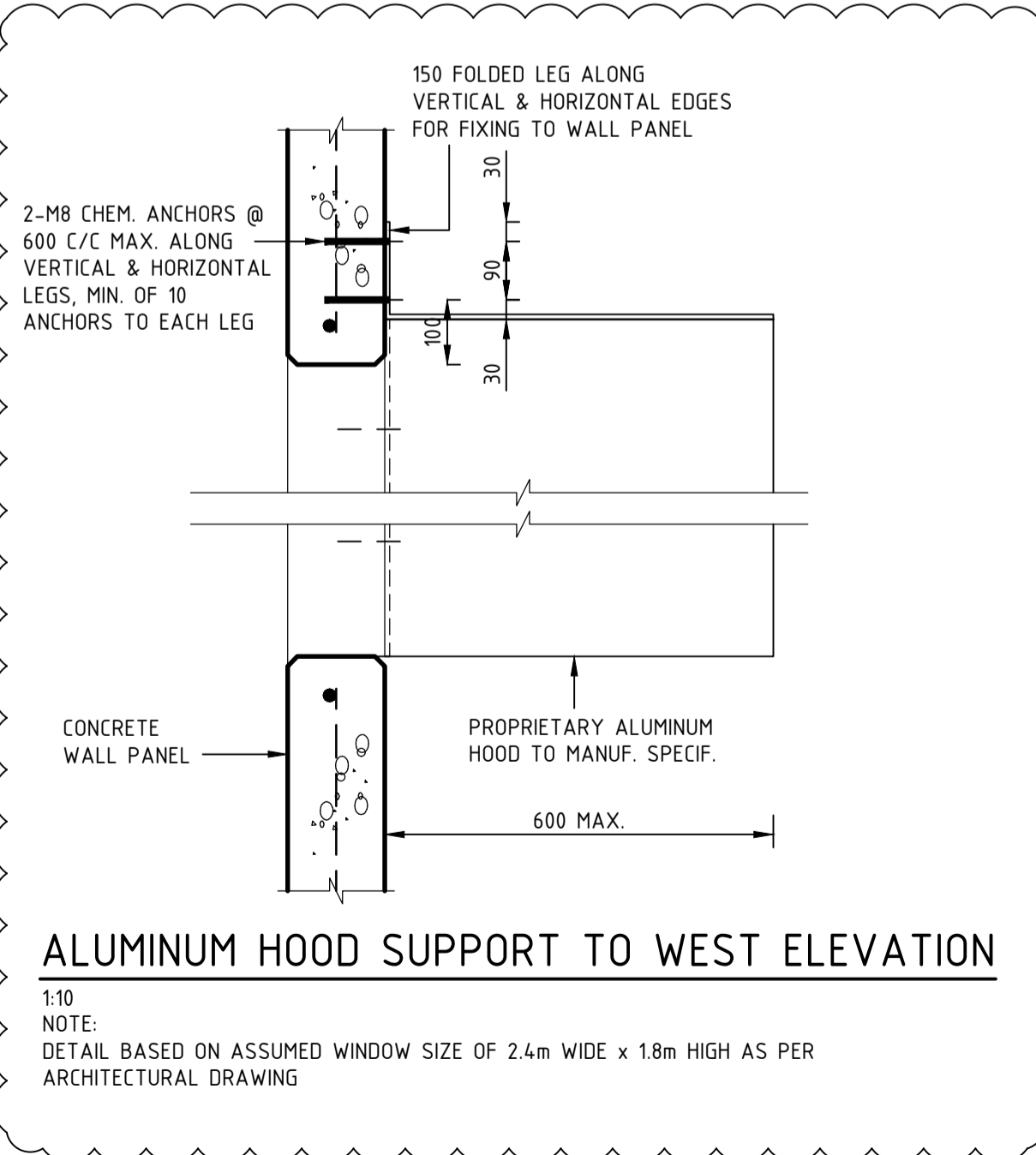
TYPICAL BR1 CROSS OVER DETAIL
NTS



VIEW FROM ARROW 'Z'
1:10



DETAIL J
1:10
NOTE:
PURLINS & FB1 OMITTED FOR CLARITY
S5



ALUMINUM HOOD SUPPORT TO WEST ELEVATION
1:10
NOTE:
DETAIL BASED ON ASSUMED WINDOW SIZE OF 2.4m WIDE x 1.8m HIGH AS PER ARCHITECTURAL DRAWING

C	AS NOTED	MY	FK	12.08.19
B	BUILDING APPROVAL ISSUE	JVI	FK	29.05.19
A	BUILDING APPROVAL ISSUE	MY	FK	21.05.19
No	REVISION	DRAWN	CHE'KD	DATE

PROJECT
PROPOSED APARTMENT
AT: 90 JOHNS ROAD
PROSPECT
FOR: CITIFY & BFC Pty Ltd

DRAWING TITLE
DETAILS

Civil
Environmental
Mechanical
Fire
Lifts

Structural
Geotechnical
Electrical
Hydraulics
Green ESD

Level 6, 100 Pirie Street,
Adelaide SA 5000
Telephone 08 8238 4100
Facsimile 08 8410 1405
Berri Office: 25 Vaughan Terrace,
Berri SA 5343

SCALES	AS SHOWN	© COPYRIGHT RESERVED
DRAWN	MY	DRAWING No.
DATE	AUG '18	1806063-S18/C
ENGINEER	FK	
CHECKED	FK	

